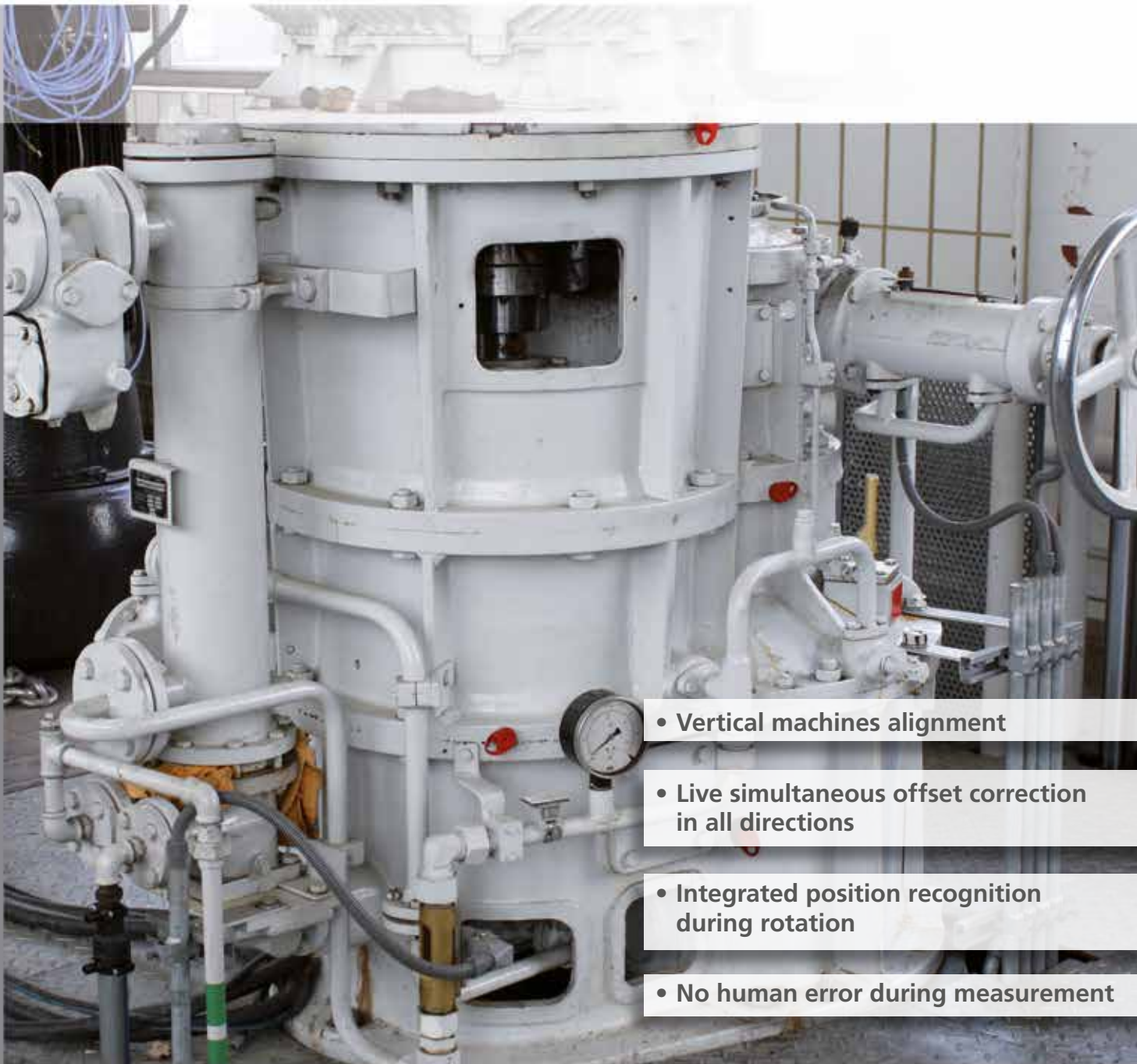


ROTALIGN[®] Ultra iS VertiSWEEP

Continuous measurement on vertical machines



- Vertical machines alignment
- Live simultaneous offset correction in all directions
- Integrated position recognition during rotation
- No human error during measurement

ROTALIGN® Ultra iS VertiSWEEP

Easy vertical alignment

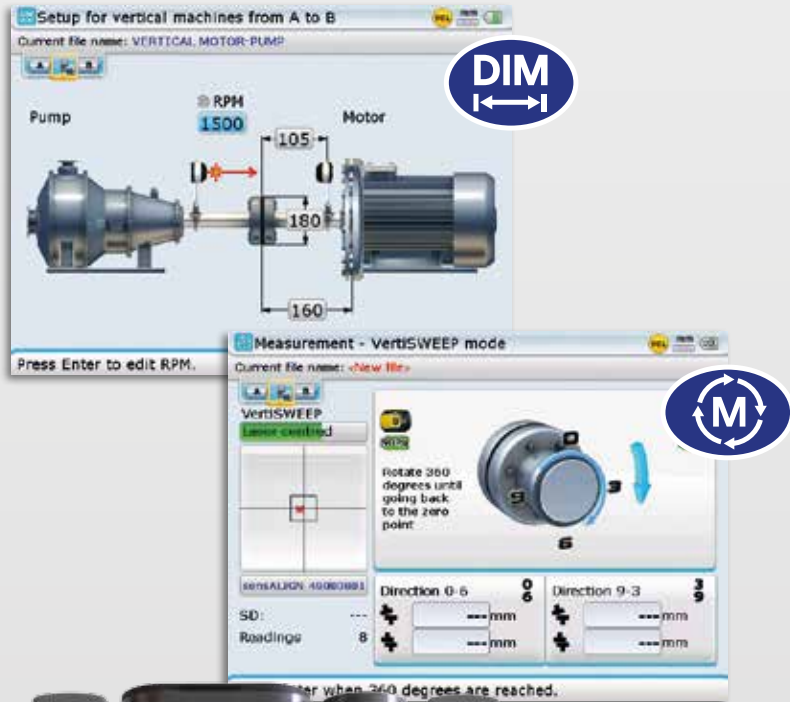
Vertical measurement is now as easy as horizontal alignment thanks to the new VertiSWEEP measurement mode.

Perform a vertical sweep to measure flange-mounted vertical machines. The device follows the rotation of the sensor and gives the result after a continuous rotation.

This is the first automatic vertical sweep measurement mode in the market for vertical rotating machines.

Highlights – VertiSWEEP

- ▶ Continuous sweep on vertical machines
- ▶ Accurate measurement with reliability factor
- ▶ Easy to use: just rotate the shaft
- ▶ Upgradable from current ROTALIGN® Ultra iS Advanced and Expert with a new firmware
- ▶ No need to stop the manual rotation to measure
- ▶ Compatible with current sensALIGN® sensors



ROTALIGN® and sensALIGN® are registered trademarks of PRUFTECHNIK Dieter Busch AG. No copying or reproduction of this information, in any form whatsoever, may be undertaken without express written permission of PRUFTECHNIK Dieter Busch AG. The information contained in this leaflet is subject to change without further notice due to the PRUFTECHNIK policy of continuous product development. PRUFTECHNIK products are subject to patents granted or pending throughout the world. ISO 9001:2008 certified. © Copyright 2014 by PRUFTECHNIK Dieter Busch AG.



PRUFTECHNIK
Alignment Systems GmbH
Freisinger Str. 34
85737 Ismaning, Germany
Tel.: +49 89 99616-0
Fax: +49 89 99616-100
info@pruftechnik.com
www.pruftechnik.com

A member of the PRUFTECHNIK group